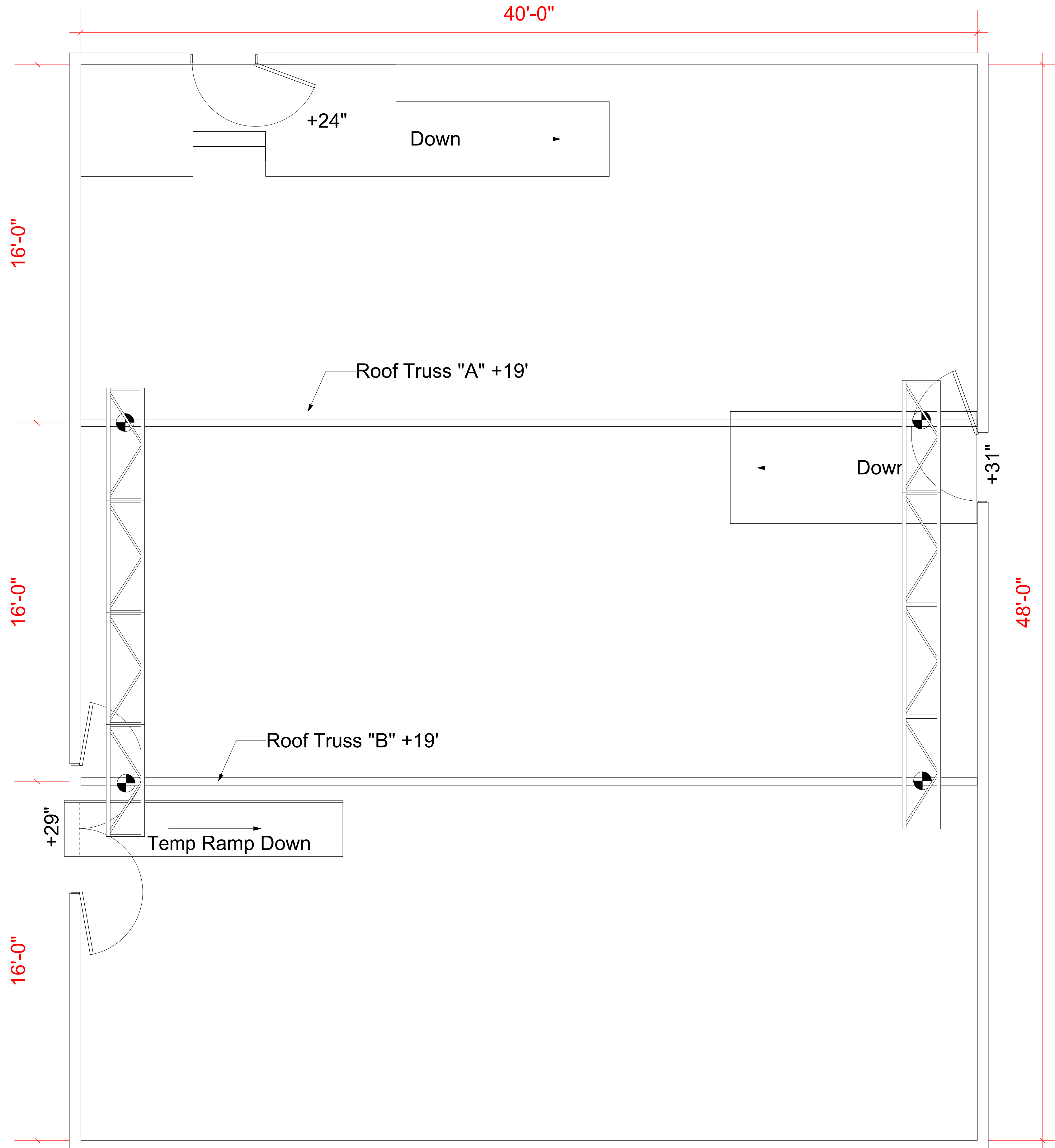
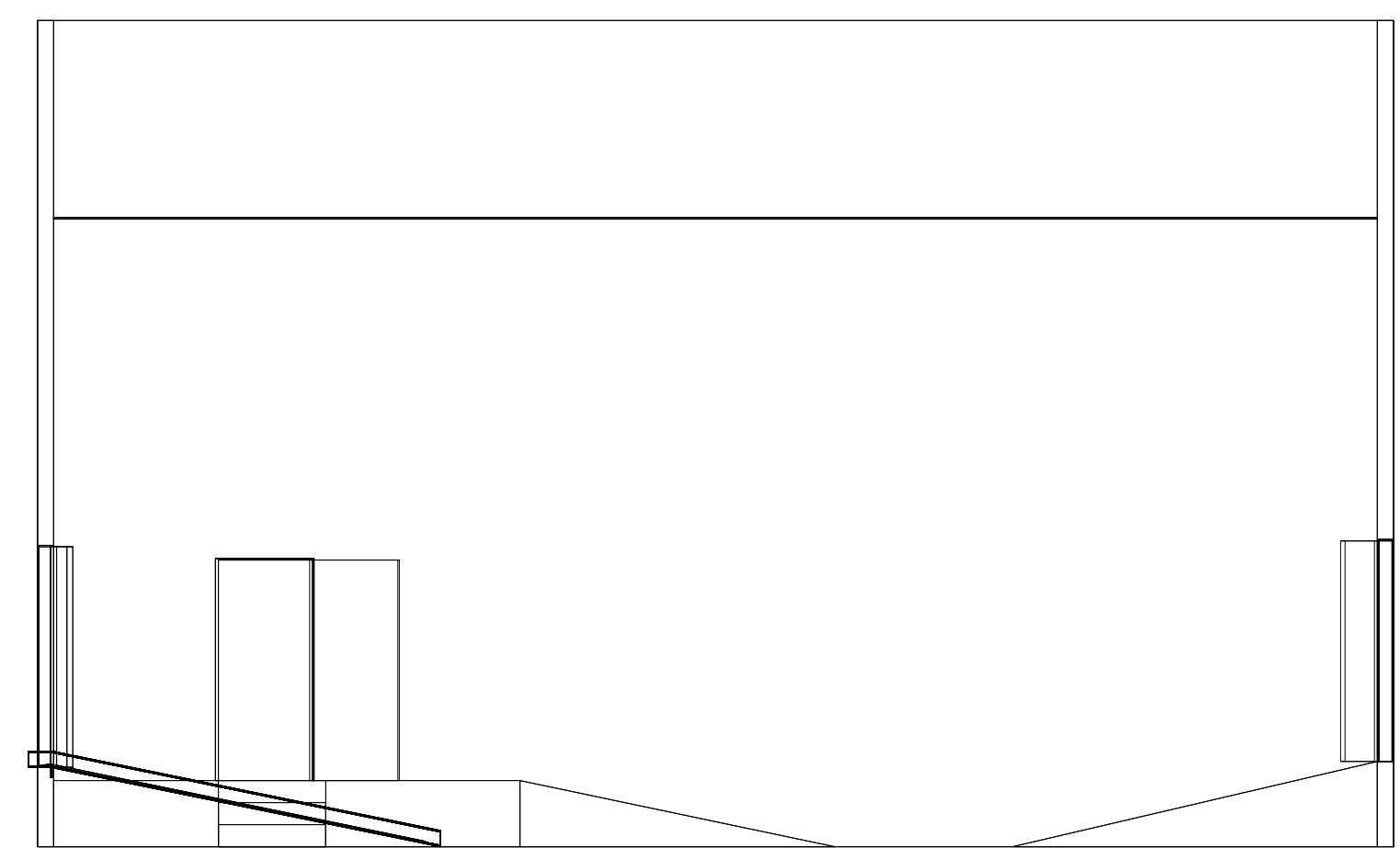


Plan  
Scale= 3/8"=1'-0"

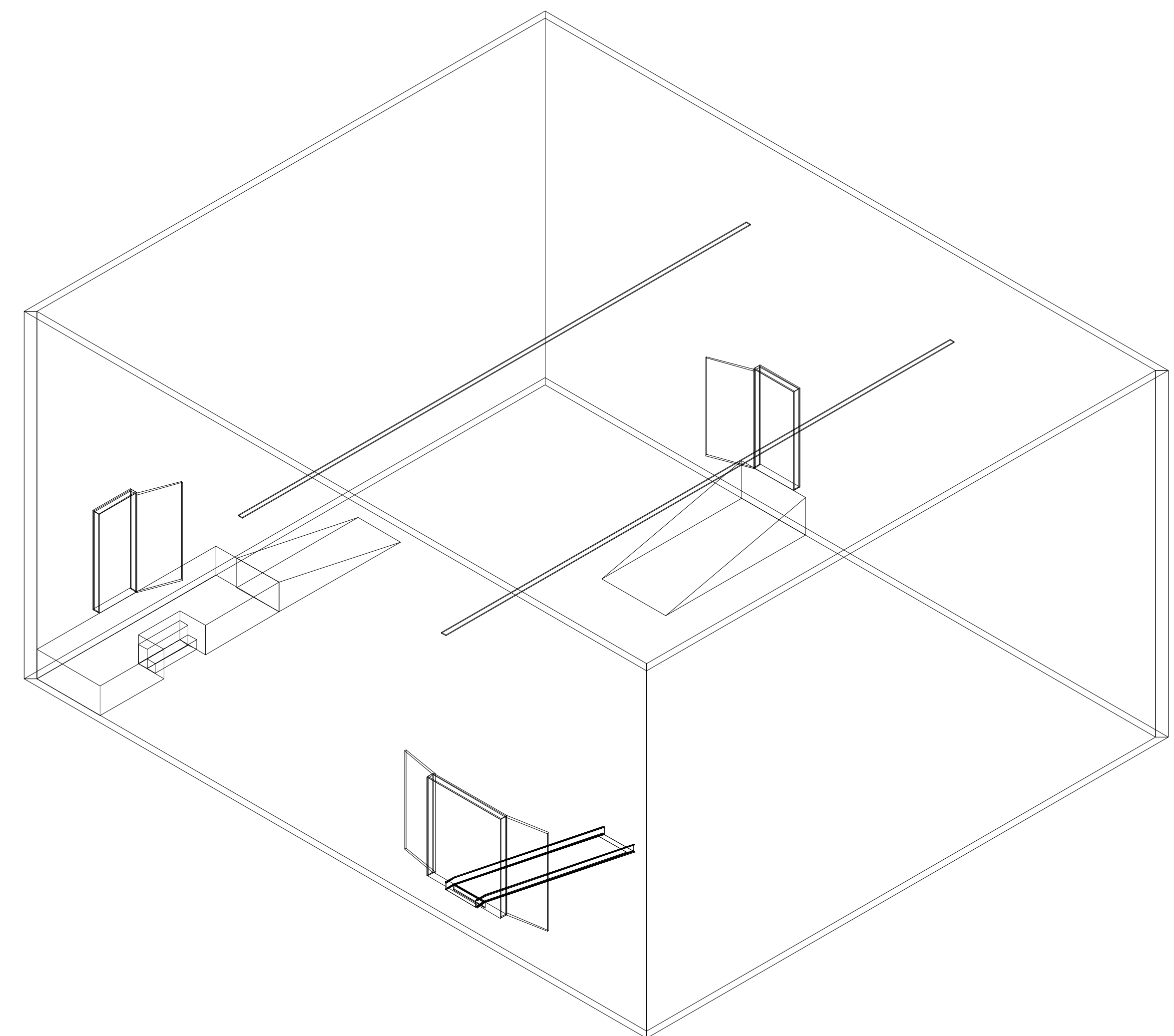
40'-0"



Elevation  
Scale= 3/16"=1'-0"



Isometric  
Scale= 3/16"=1'-0"



SST  
SOUND STAGE  
SST  
1806 Park Avenue  
Weehawken, NJ 07086

PLAN  
Drawn By: Bucci  
Date Drawn: 10/10/14  
Scale: 24x36= NOTED

**DIVERSIFIED PRODUCTION SERVICES**  
1801 Willow Avenue Suite # 101  
Weehawken, NJ 07086  
P (646) 386-2100 F (646) 386-2111  
www.dps-us.com  
Dan Patis - dpatis@dps-us.com Hans Poleman - hpoleman@dps-us.com  
(646) 386-2110 Office | (917) 763-2427 Cell (646) 386-2105 Office | (917) 699-9047 Cell  
Chris Balogh - cbalogh@dps-us.com Dave Meyers - davemeyers@dps-us.com  
(646) 386-2104 Office | (659) 448-9791 Cell (646) 386-2103 Office | (201) 906-2387 Cell

This document and the ideas and design incorporated herein, as an instrument of professional service, are the property of Diversified Production Services and is not to be used, in whole or part, for any other project without written authorization. This document is not to be reproduced and/or modified in any way, nor shall any authorized reproduction of this document be modified without prior written consent. This drawing represents visual concepts and construction suggestions only; it does not replace the knowledge and advice of a licensed structural engineer. All electrical drawings should be issued and approved by a licensed electrical engineer. Diversified Production Services takes no responsibility, and herewith disclaims all liability for the erection, engineering or use of any component or concept shown on this or any other drawings; does not warrant, in any way, the accuracy of this information; shall not be responsible for discrepancies between this drawing and existing conditions; and will not assume responsibility for improper construction or handling of this equipment.